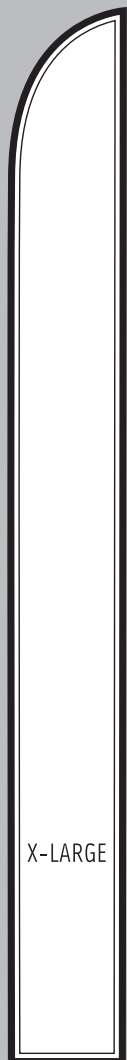
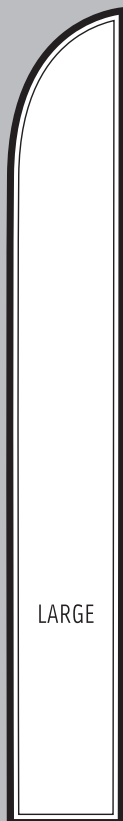


# WING BANNERS



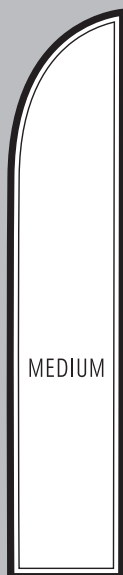
X-LARGE

- ▲ 6.7 m (21' 11")\*
- ▶ 0.7 m (2' 4")
- 5.0 kg (11.0 lb)



LARGE

- ▲ 5.3 m (17' 5")\*
- ▶ 0.7 m (2' 4")
- 4.3 kg (9.5 lb)



MEDIUM

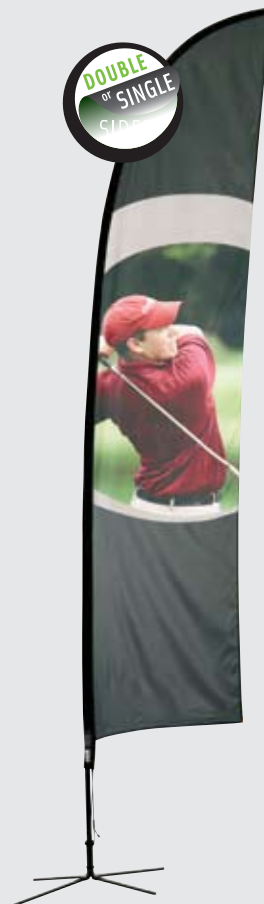
- ▲ 4.0 m (13' 1")\*
- ▶ 0.7 m (2' 4")
- 2.4 kg (5.3 lb)



SMALL

- ▲ 2.7 m (8' 10")\*
- ▶ 0.7 m (2' 4")
- 1.7 kg (3.7 lb)

\* Standing height off a universal base



Wing Banners are great for indoor and outdoor use and are available in a range of sizes.

Wing Banners are now available in our uniquely engineered fabric to give the option of printing single or double sided. The innovative rotating mechanism allows them to 'feather' out the wind and they are effective individually or in a cluster.

These Banners come with a standard metal stake and are also compatible with our other hardware. The complete unit is supplied in a portable custom made carry bag with a padded compartment for the stake. The poles for the Flying and Wing Banners are interchangeable.



MEDIUM FEATHER BANNER

